

**Invested**  
 copyright 2007  
 Sauniell N. Connally  
*For non-commercial use only*

**Yarn:** Lion Brand Wool-Ease Thick & Quick [80% Acrylic, 20% Wool; 108yd/m per 170g skein]; 145: Plum; 3 [3, 3, 4, 4, 4, 5] skeins

**Yarn Substitutions:** Any super chunky weight yarn

**Needles:** 1 set US #10/6mm straight needles  
 1 set US #11/8mm straight needles

**Supplies:** 22 inch jacket zipper, stitch markers, tapestry needle, needle, thread

**Gauge:** 10sts-12.5 rows per 4 inch(10cm) in pattern stitch

**Sizes:** XS(S, M, L, 1X, 2X, 3X)

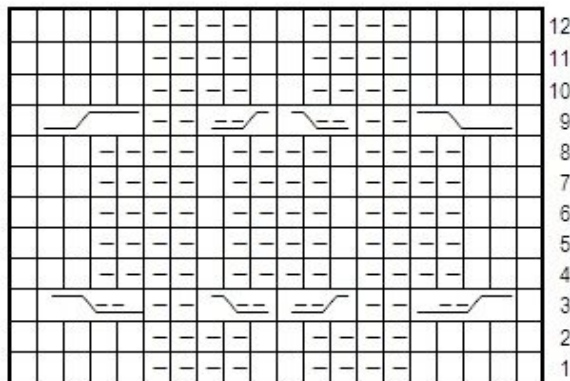
**Finished Bust:** 32 ( 35 38, 41, 45, 49, 53) inches / 86( 91, 96, 101, 106, 112) cm

**Skill Level:** Intermediate



**Stitch Instructions:**

- 3-st right purl twist - sl 2 sts to cn, hold to back, k1, p2 from cn
- 3-st left purl twist - sl 1 to cn, hold to front, p2, k1 from cn
- 4-st right purl cable - sl 2 to cn, hold to back, k2, p2 from cn
- 4-st left purl cable - sl 2 to cn, hold to front, p2, k2 from cn
- 4-st right cable - sl 2 to cn, hold to back, k2, k2 from cn
- 4-st left cable - sl 2 to cn, hold to front, k2, k2 from cn



Cable Chart (20 sts)

Key	
—	knit RS, purl WS
—	purl RS, knit WS
≡	3-st right purl twist
≡	3-st left purl twist
≡	4-st right cable
≡	4-st left cable
≡	4-st left purl cable
≡	4-st right purl cable

---

## PEPLUM

Using US #11 needles, CO 22 sts. K 2 rows.

### Sizes M-3X:

Next row [RS]: K1, work Row 1 of chart pattern, k1.

Next row [WS]: K1, work Row 2 of chart pattern, k1.

Repeat last 2 rows.

### All sizes:

Next row [RS]: K1, work Row 1 of chart pattern, k1.

Cont. pattern as set, repeating chart 8[ 9, 9, 10, 11, 12, 13] times.

### Sizes M-3X:

Next row [RS]: K1, work Row 1 of chart pattern, k1.

Next row [WS]: K1, work Row 2 of chart pattern, k1.

Repeat last 2 rows.

### All sizes:

K 2 rows and BO.

## FRONT LEFT

CO 20[ 22, 24, 26, 30, 32, 34] sts.

*Next row [RS]:* k0 [1, 2, 3, 5, 6, 7], work Row 1 of cable pattern, k0 [1, 2, 3, 5, 6, 7].

*Next row [WS]:* p0 [1, 2, 3, 5, 6, 7], work Row 2 of cable pattern, p0 [1, 2, 3, 5, 6, 7].

Cont. pattern as set, repeating cable pattern until piece measures 7 inches, ending with a WS row.

\*\*

### Shape armholes

*Decrease row [RS]:* k2, ssk, work in patt to end.

*Decrease row [WS]:* work to last 4 sts, p2tog tbl, k2. From this point, k last 2 sts of all WS rows.

Repeat last 2 rows 1[1, 1, 1, 2, 2, 2] times. 16 [18, 20, 22, 24, 26, 28] sts.

Repeat RS dec row 1[1, 2, 2, 2, 2, 2] times.

15[17, 18, 20, 22, 24, 26] sts.

Cont. until armhole measures 5.5[5.5, 6, 6, 6.5, 6.5, 7] inches, ending with RS row.

### Shape neckline

*Next row [WS]:* BO 3[5, 5, 6, 6, 6, 6] sts. 12[12, 13, 14, 16, 18, 20] sts.

*Next dec row [RS]:* Work to last 3 sts, k2tog, k1.

*Next row [WS]:* P1, p2tog, work to end 10[10, 11, 12, 14, 16, 18] sts.

Repeat last 2 rows 0[0, 0, 0, 1, 1, 1] times.

*Next row [RS]:* repeat dec row 1[1, 1, 1, 0, 1, 1] time. 9[9, 10, 11, 12, 13, 15] sts.

Cont until armhole measures 7.5 [7.5, 8, 8, 8.5, 8.5, 9] inches.

## FRONT RIGHT

Work same as Front Left to \*\*.

### Shape armholes

*Decrease row [RS]:* work to last 4 sts, k2tog, k2.

*Decrease row [WS]:* k2, p2tog, work to end.

From this point, k first 2 sts of all WS rows.

Repeat last 2 rows 1[1, 1, 1, 2, 2, 2] times. 16 [18, 20, 22, 24, 26, 28] sts.

Repeat RS dec row 1[ 1, 2, 2, 2, 2, 2] times.

15[17, 18, 20, 22, 24, 26] sts.

Cont. until armhole measures 5.5[5.5, 6, 6, 6.5, 6.5, 7] inches, ending with WS row.

### Shape neckline

*Next row [RS]:* BO 3[5, 5, 6, 6, 6, 6] sts. 12[12, 13, 14, 16, 18, 20] sts.

*Next decrease row [WS]:* Work to last 3 sts, p2tog tbl, p1.

*Next row [RS]:* k1, ssk, work to end 10[10, 11, 12, 14, 16, 18] sts.

Repeat last 2 rows 0[0, 0, 0, 1, 1, 1] times.

Work WS row.

*Next row [RS]:* repeat dec row 1[1, 1, 1, 0, 1, 1] time. 9[9, 10, 11, 12, 13, 15] sts.

Cont until armhole measures 7.5 [ 7.5, 8, 8, 8.5, 8.5, 9] inches.

## BACK

CO 40[44, 48, 52, 60, 64, 66] sts.

Next row [RS]: k 0[2, 4, 6, 10, 12, 13], work Row 1 of cable pattern 2 times, k 0[ 2, 4, 6, 10, 12, 13].

Next row [WS]: p 0[2, 4, 6, 10, 12, 13], work Row 2 of cable pattern 2 times, p0 [2, 4, 6, 10, 12, 13].

Cont. to work pattern as set, repeating cable pattern until piece measures 7 inches, ending with a WS row.

## Shape armholes

Work armhole shaping as described in the Front Left & Right. 30 [34, 36, 40, 44, 48, 50] sts.

Work until armholes measure 6[6, 6.5, 6.5, 7, 7, 7.5] inches, ending with WS row.

## Shape neckline

Next row [RS]: work 10[10, 12, 13, 14, 15, 16], BO 10[14, 12, 14, 16, 18, 18] sts, work to end. Cont. working sides separately.

Left:

Work WS row.

Next decrease row [RS]: k1, ssk, work to end.

Work WS row. Repeat dec. row next RS 0[0, 1, 1, 1, 1, 1] times.

Cont until armhole measures 7.5 [7.5, 8, 8, 8.5, 8.5, 9] inches.

Right:

Attach yarn and work WS row.

Next dec row [RS]: Work to last 3 sts, k2tog, k1.

Work WS row. Repeat dec row next RS 0[0, 1, 1, 1, 1, 1] times.

Cont until armhole measures 7.5 [7.5, 8, 8, 8.5, 8.5, 9] inches.

## FINISHING

Weave in ends and block.

Sew shoulder seams of back and front pieces.

Sew side seams.

Sew peplum to upper body.

Seam side and shoulder seams

## COLLAR

Using US #10 needles, pick-up and knit 26[34, 40, 44, 48, 48, 50] sts. Knit 12 rows and BO .

Sew zipper to front edges.

